



Converter Accessory Corporation  
www.converteraccessory.com



Core Locking / Holding Systems  
www.cor-lok.com



# Mechanical Chucks and Shafts



6" COR-LOK  
Mechanical Chuck



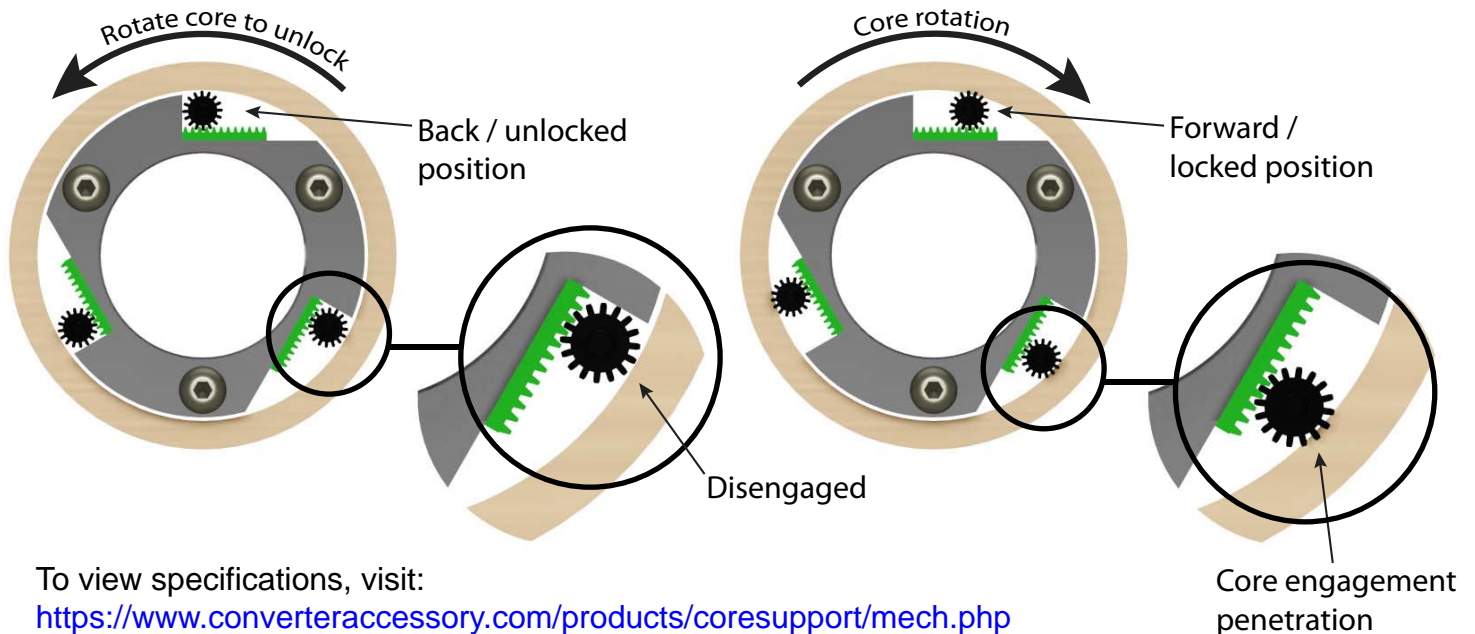
3" COR-LOK  
Mechanical Chuck

## Sizes available in standard and metric for 2" - 18" cores

COR-LOK® mechanical chucks are the answer for applications where simple core support is required. These chucks do not require any compressed air to operate. They engage and lock the core without tools or any external operation by the machine operator. When your roll starts to rotate, these chucks automatically engage your core and lock it in place.

**Unique locking element, no springs, no teeth.**

COR-LOK® mechanical chucks are an excellent answer where heavy duty, high torque core support is required. They work equally well for light duty applications. They are available in aluminum, steel and stainless steel (body only).



## Converter Accessory Corporation

201 Alpha Road, PO Box 188, Wind Gap, PA 18091-0188

www.converteraccessory.com  
sales@converteraccessory.com

Phone: 800-433-2413  
610-863-6008

Fax: 800-709-1007  
610-863-7818



# End and Center Plugs

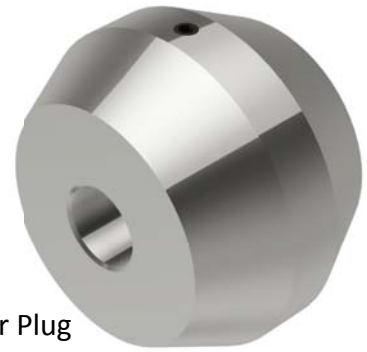
Converter Accessory Corporation  
www.converteraccessory.com



Core Locking / Holding Systems  
www.cor-lok.com



End Plug  
for 6" cores



Center Plug  
for 6" cores



End Plug  
for 3" cores

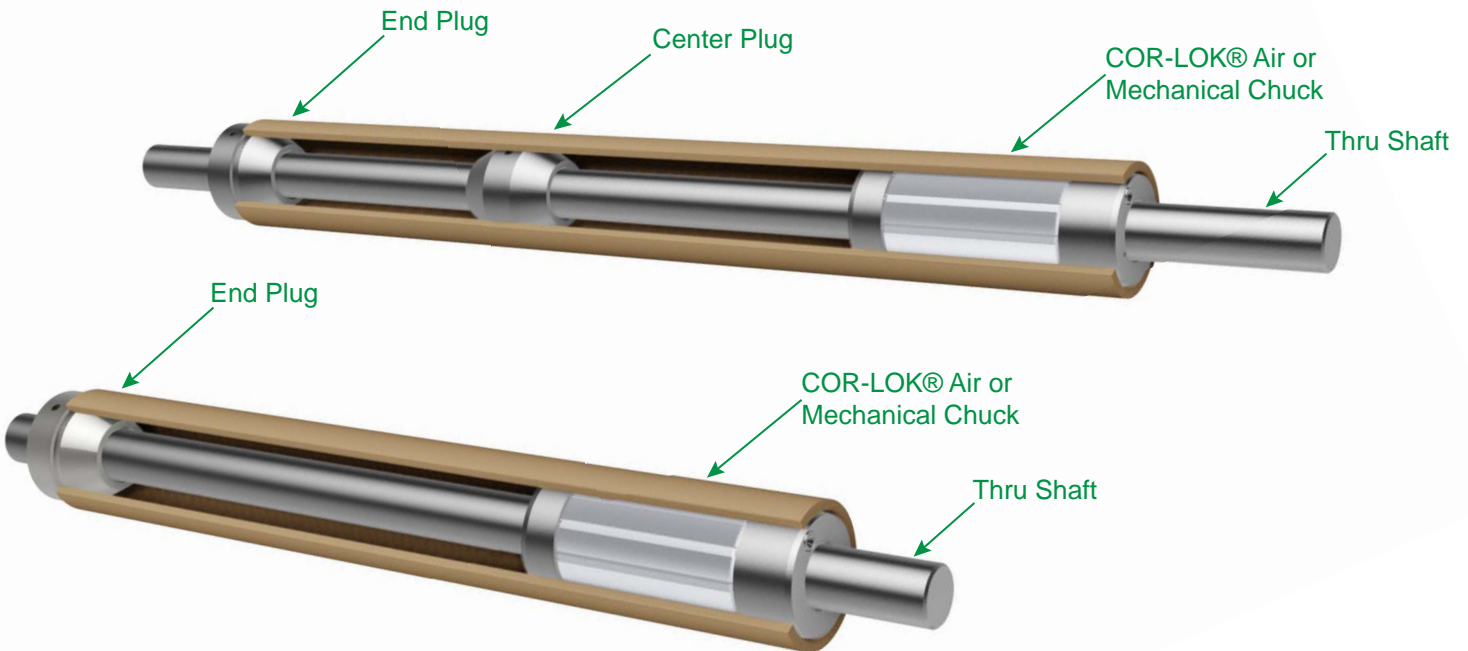


Center Plug  
for 3" cores

## Sizes available in standard and metric for 2" - 18" cores

Designed to operate with CAC's COR-LOK air chucks; COR-LOK end plugs are the perfect answer to support material roll cores opposite the chuck supported end, in unwind and rewind applications where dual air chuck support is not required. Center plugs support wide material roll cores between air chuck and end plug core supports. CAC's end and center plugs feature the same split bushing locking mechanism as COR-LOK air chucks, ensuring concentricity and zero center shaft damage. Typical material of construction is aluminum for light-weight, easy handling. Their cone shape makes core insertion a breeze, while the flat core support land will not bias roll orientation during unwind or rewinding.

To view specifications, visit: <https://www.converteraccessory.com/products/coresupport/end.php>



## Converter Accessory Corporation

201 Alpha Road, PO Box 188, Wind Gap, PA 18091-0188

www.converteraccessory.com  
sales@converteraccessory.com

Phone: 800-433-2413  
610-863-6008

Fax: 800-709-1007  
610-863-7818